

SEW TOOT

EASY BREEZY MESH PANEL

TUTORIAL



Expand your customization options with a mesh panel add-on for The Little Pick-Me-Up carrier sewing pattern. Create your own warm weather carrier with a cool look and feel.

This breathable mesh panel tutorial will assist you in creating your own ventilated carrier body panel. Hot weather is no match for mesh! This add-on to the Little Pick-Me-Up (LPMU) pattern opens up even more possibilities for customization! Five panel sizes are included in the tutorial; you'll get predictable sizing and standard results. Visit sewtootpatterns.com for The Little Pick-Me-Up base pattern and other carrier sewing patterns!

BEAUTIFUL, FUNCTIONAL DESIGN
Look and stay cool while showing off your favorite fabrics.



ADEQUATE REINFORCEMENT
We take safety seriously so you can take the guesswork out of your carrier project and focus on what you love most--holding your little one close.

FABRIC REQUIREMENTS

RECOMMENDED FABRICS: Mesh fabrics (athletic mesh, spacer mesh, or wicking piques, cool max, and Koolnit) with slight to moderate stretch. Based on 58/60" wide fabric.

EASY BREEZY MESH (ALL SIZES)

1/2 YARD

SKILL LEVEL:



SEW TOOT

Copyright 2016 Sew Toot, LLC. All Rights Reserved.

THIS PATTERN IS FOR PERSONAL USE ONLY.

Do not share, duplicate, or publish the contents of this pattern in whole or in part without written consent from Sew Toot.

TERMS OF USE / LIMITATIONS OF LIABILITY

It is the sole responsibility of each user/maker to ensure that the carrier they make is safe for use. These instructions are suggestive and cannot guarantee that your carrier will be safe for carrying a child. Proper supply choices, quality of seams, and reinforcement stitching will play a major role in determining the safety of a finished carrier. Users of carriers should be familiar with safe babywearing practices. Visual inspection of the carrier's seams and components is vital before each use. Sew Toot, LLC accepts no liability [not limited to faulty construction, hardware failure, improper use, or poor material choices] for damages or injury resulting from the use of a carrier made from this pattern. However, we do our best to ensure that our patterns will result in a safe, functional carrier for each pattern user. Please contact a professional babywearing consultation organization or service for advice on safe wearing practices.

SELLING ITEMS MADE FROM THIS PATTERN

The sale of items made from this pattern is contingent upon the pattern user following applicable safety regulations in the manufacturing country and the country of import. The safety of the children being worn should always be our biggest priority. Please contact me regarding licensing requirements and/or design services for commercial production. We love work-at-home parents-- so there is no licensing requirements for smaller scale manufacturing.

PATTERN SUPPORT & RESOURCES

Need help? Send an email to SEWTOOT@LIVE.COM

To gain access to the Facebook support group featuring sewalongs, additional support, and modifications for the LPMU pattern; send an email to [sewtoot@live.com] with your order number and an email address that you would like the invitation to be sent to.

Check out the Sew Toot website for additional tutorials including troubleshooting sewing issues, wearing resources and tutorials for accessories!

WWW.SEWTOOTPATTERNS.COM

GETTING STARTED

PROJECT OUTLINE

These instructions are the same for all panel sizes. We'll start by assembling the pattern pieces. The Little Pick-Me-Up pattern requires two body panels so we'll piece together both an "exterior" and a "lining" panel with these instructions to fulfill that requirement. After the panels are assembled, resume construction based on The Little Pick-Me-Up carrier pattern instructions.

MATERIALS

Ballpoint needle

Walking foot (optional)

Spray adhesive (optional)

EASY BREEZY MESH PANEL

1/2 YARD MESH

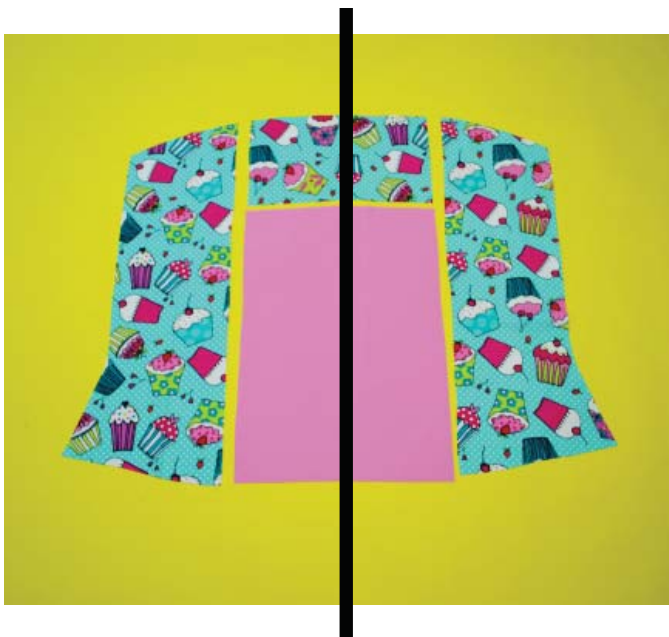
CUTTING GUIDE

EXTERIOR PANEL LAYERING

The mesh body panel has the same structural requirements as The Little Pick-Me-Up pattern; you'll need a total of two bottom-weight layers to safely construct the body. Because the LPMU pattern utilizes a decorative layer, for this tutorial the "exterior" layer will actually be composed of two fabrics layers stacked on top of one another-- a bottom-weight fabric and a decorative quilting cotton. We'll be using a single layer of mesh for both the exterior and lining panels.

CUTTING VISUAL

I've divided the picture below into two halves to show how the framed panel pieces work together. The dividing line symbolizes the halved pattern pieces you'll be assembling next. The two pieces that the line intersects need to be cut on the fold of the fabric. This will create the full fabric piece once opened. For your convenience, I've included a cutting guide for the exterior and lining panels on the next two pages. Cut your fabric pieces based on the exterior and lining panel cutting guides.

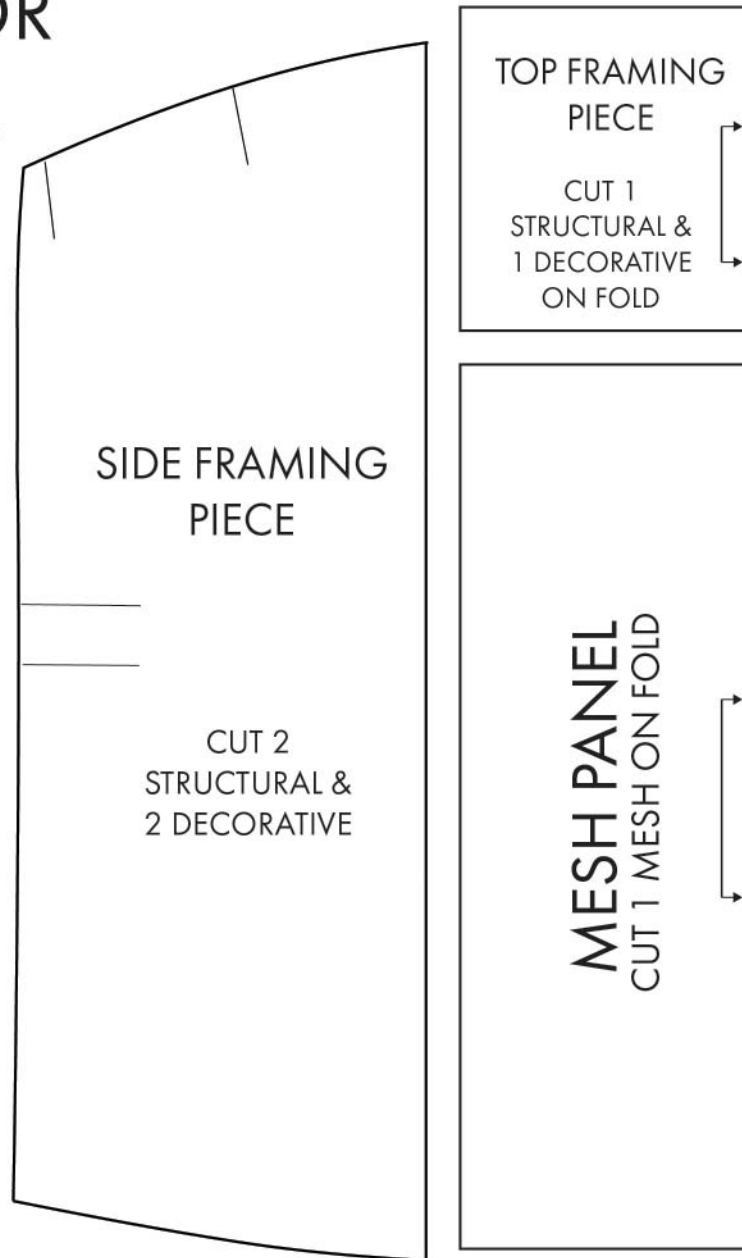


FRAMED PANEL DESIGN

Because of the framed panel design, we'll be working with a central mesh piece, and three framing pieces.

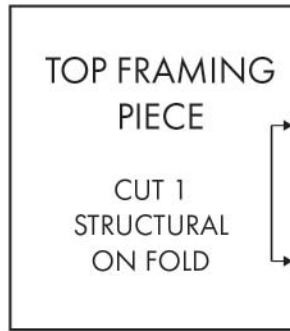
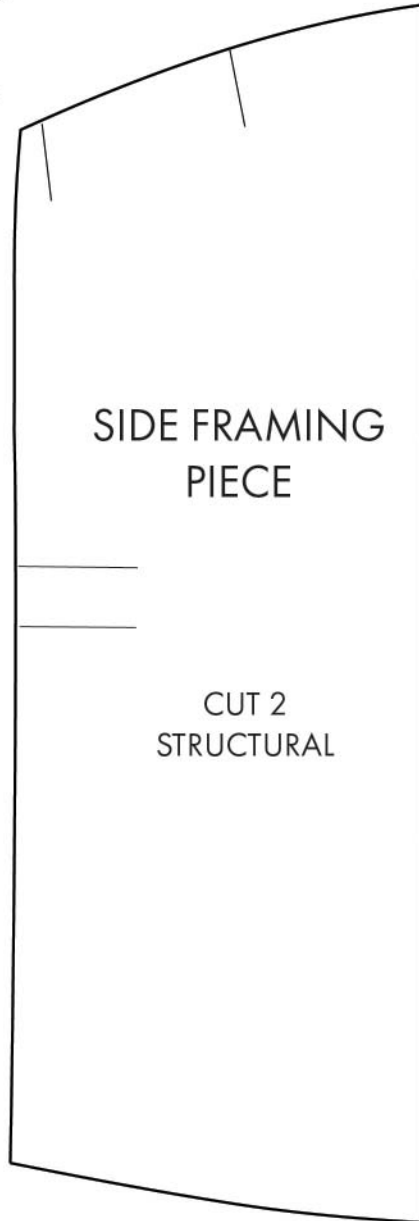
CUTTING GUIDE (CONT'D)

EXTERIOR PANEL



CUTTING GUIDE (CONT'D)

LINING
PANEL





CUTTING THE FABRIC PIECES

Cut your fabric according to the pattern pieces and cutting guides for the exterior and lining panels.

For the exterior panel, baste the decorative and structural panel pieces together with the decorative pieces facing right side up (I recommend a light layer of spray adhesive to speed this step up).



PIECING THE EXTERIOR PANEL

Take the top framing piece for the exterior panel and place the bottom edge right side down over the top edge of the mesh, which should be facing right side up.

Stitch across the top of the pieces with a 1" seam allowance.



Open the pieces and press the seam away from the mesh. Take care when ironing near the mesh-- I use steam and finger press the mesh separately.



Take one of the side panel pieces and position it right side down over the mesh piece, which should be facing right side up.

Beginning with the tops of the pieces, line up the long straight edge of the side framing panel with the long side edge of the pieced mesh panel. You may have a small amount of overhang at the bottoms of the pieces- this will be hidden inside the waistband later.

[Your pieces should look like the photo to the left or a mirror image of it.]

Sew along the long straight edge with a 1" seam allowance.



Open up the seam and on the reverse side, press the seam away from the mesh.



Repeat this same process for the other side panel.



Open up the seam and press it away from the mesh as shown in the picture to the left.

Now all seams should be pressed in the opposite direction of the mesh.

[This is important because we don't want to see the seams later through our panel.]



Now that the exterior panel is assembled, we need to reinforce the mesh cut-out. To do this, stitch 3/8" from the mesh panel on all three sides. Don't forget to backstitch at the beginning and the end!



The photo to the left shows the reinforcement stitching around the perimeter of the mesh.



Now that you've reinforced the panel, you can remove a bit of the bulk from the two vertical seams, but **ONLY** at the very top of the panel (the black fabric pictured here in this photo). Don't clip any of the seams with mesh.

Clipping the seams at the very top of the panel will reduce bulk when we sew the body together.



Repeat the entire piecing process for the lining panel including reinforcement stitching. Now you can resume LPMU construction!

YOU DID IT!

Now do a victory dance and finish that LPMU!

#sewtoot #lpmu #easybreezymesh



SAFETY TIPS

Be sure to inspect your carrier prior to each use. Do not harshly pull on your carrier to test the seams. The Baby Carrier Industry Alliance recommends testing your handmade carrier by wearing it with a 50 pound weight in it. This will shed light on any pressing safety concerns.

ADDITIONAL RESOURCES

Head over to the Sew Toot website for other carrier patterns, sewing tutorials, and babywearing resources!

www.sewtootpatterns.com

QUICK PRINT GUIDE

EASY BREEZY MESH PANEL

PRINT PATTERN AT "ACTUAL SIZE"

SIMPLY OVERLAP THE SOLID BOXES ON THE PATTERN PIECES TO ASSEMBLE

CUT AROUND THE SOLID OUTLINE OF EACH ASSEMBLED PIECE, TRIMMING OFF ANY OVERHANG FROM OVERLAP BOXES

BABY	15-19
STANDARD	20-24
TWEENY TOT	25-30
TODDLER	31-36
PRESCHOOL	37-42

COPYRIGHT © 2016 SEW TOOT. ALL RIGHTS RESERVED.

THE CONTENTS OF THIS PATTERN [INSTRUCTIONS, PHOTOS, AND ILLUSTRATIONS] ARE PROTECTED BY COPYRIGHT AND BELONG EXCLUSIVELY TO SEW TOOT, LLC.

STRAP PLACEMENT

SEW TOOT

EASY BREEZY MESH PANEL

© 2016 SEW TOOT

SIDE FRAMING
PANEL

PIECE 1/2

UNDERARM
WEBBING
PLACEMENT

BABY



SIDE FRAMING
PANEL

PIECE 2/2

BABY

BABY

TOP FRAMING
PANEL

PLACE ON FOLD

SEW TOOT

EASY BREEZY MESH PANEL

© 2016 SEW TOOT

BABY

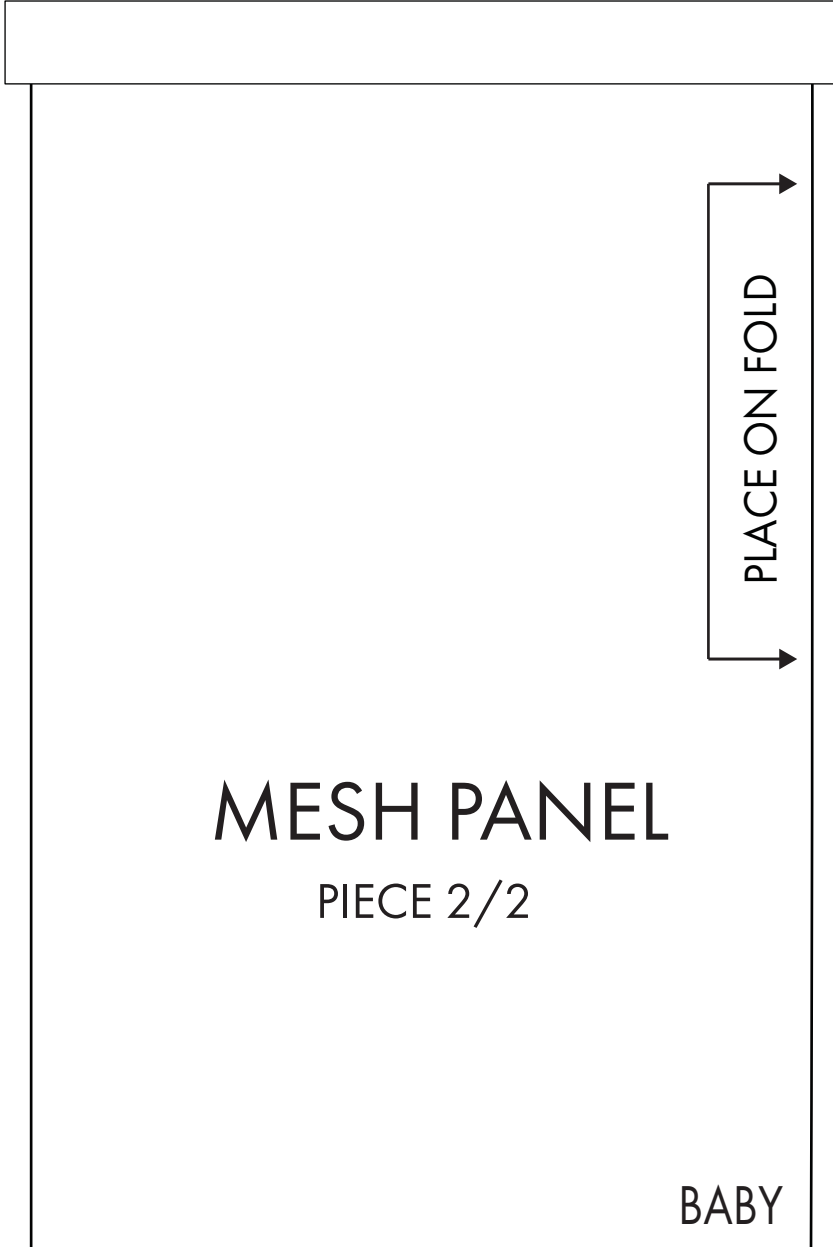
SEW TOOT

EASY BREEZY MESH PANEL

© 2016 SEW TOOT

MESH PANEL

PIECE 1/2



MESH PANEL

PIECE 2/2

BABY

STRAP PLACEMENT

SEW TOOT

EASY BREEZY MESH PANEL

© 2016 SEW TOOT

SIDE FRAMING
PANEL

PIECE 1/2

UNDERARM
WEBBING
PLACEMENT

STANDARD



SIDE FRAMING
PANEL

PIECE 2/2

STANDARD

STANDARD

TOP FRAMING
PANEL



SEW TOOT

EASY BREEZY MESH PANEL

© 2016 SEW TOOT

STANDARD

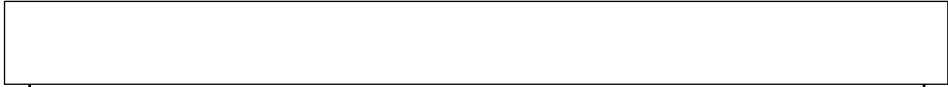
SEW TOOT

EASY BREEZY MESH PANEL

© 2016 SEW TOOT

MESH PANEL

PIECE 1/2



PLACE ON FOLD

MESH PANEL

PIECE 2/2

STANDARD

STRAP PLACEMENT

SEW TOOT

EASY BREEZY MESH PANEL

© 2016 SEW TOOT

SIDE FRAMING

PANEL

PIECE 1/3

TWEENY TOT

UNDERARM
WEBBING
PLACEMENT

SIDE FRAMING PANEL

PIECE 2/3

TWEENY TOT



SIDE FRAMING
PANEL

PIECE 3/3

TWEENY TOT

TWEENY TOT

TOP FRAMING PANEL

PLACE ON FOLD



SEW TOOT

EASY BREEZY MESH PANEL

© 2016 SEW TOOT

TWEENY TOT

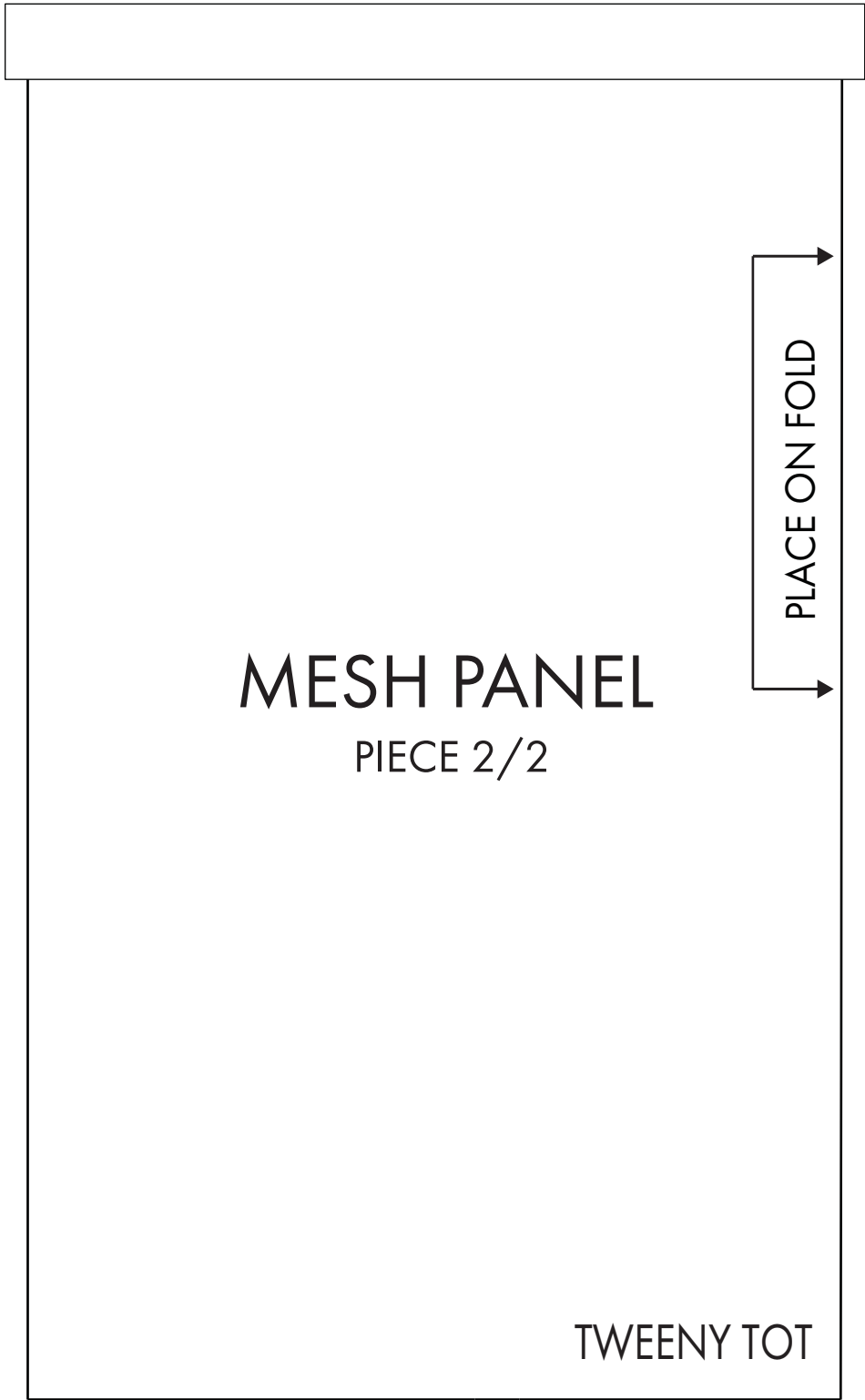
SEW TOOT

EASY BREEZY MESH PANEL

© 2016 SEW TOOT

MESH PANEL

PIECE 1/2





STRAP PLACEMENT

SEW TOOT

EASY BREEZY MESH PANEL

© 2016 SEW TOOT

SIDE FRAMING
PANEL

PIECE 1/3

TODDLER

UNDERARM
WEBBING
PLACEMENT

SIDE FRAMING PANEL

PIECE 2/3

TODDLER



SIDE FRAMING
PANEL

PIECE 3/3

TODDLER

TODDLER

TOP FRAMING
PANEL

PLACE ON FOLD

SEW TOOT

EASY BREEZY MESH PANEL

© 2016 SEW TOOT

TODDLER

SEW TOOT

EASY BREEZY MESH PANEL

© 2016 SEW TOOT

MESH PANEL

PIECE 1/2



MESH PANEL

PIECE 2/2



TODDLER



STRAP PLACEMENT

SEW TOOT

EASY BREEZY MESH PANEL

© 2016 SEW TOOT

SIDE FRAMING

PANEL

PIECE 1/3

PRESCHOOL

UNDERARM
WEBBING
PLACEMENT

SIDE FRAMING PANEL

PIECE 2/3

PRESCHOOL

SIDE FRAMING
PANEL

PIECE 3/3

PRESCHOOL

PRESCHOOL

TOP FRAMING
PANEL



SEW TOOT

EASY BREEZY MESH PANEL

© 2016 SEW TOOT

PRESCHOOL

SEW TOOT

EASY BREEZY MESH PANEL

© 2016 SEW TOOT

MESH PANEL

PIECE 1/2

MESH PANEL

PIECE 2/2

PRESCHOOL